

PTW Asia Equipment Sales



MATECH WaferEtch 456-G2
SN: G2/2-1107A
Vintage 2007/11
Wafersize 150/200mm

MATECH_WaveEtch 456-G2 SN:G2/2-1107A

MATECH	WaveEtch 456-G2
Serial number:	G2/2-1107A
Date of production	11/2007
Supply:	208 VAC / 50-60 Hz
Supply lead:	3 x 10 AWG L1/L2(N)/PE
Control voltage:	24 VDC
Full load current:	30A
Current limited fuse:	30A
Circuit diagram no:	G2v.1.1-F5.1-5.4/2007
Weight:	795 kg



M A T E C H

Materials and Technologies Corp.
641 Sheafe Road, Poughkeepsie, NY 12601
Voice: 845.463.2799 Fax: 845.463.2786
info@matech.com www.matech.com

mechatronic	
Systemtechnik gmbH:	EFEM 150/200
Serial number:	EFEM 150/200-001-07-11
Date of production:	11/2007
Supply:	200-240 VAC / 50-60 Hz
Supply lead:	3 x 2,5 mm ² L1/L2(N)/PE
Control voltage:	24 VDC
Full load current:	16 A
Current limited fuse:	C16A
Circuit diagram no:	2007110001
Weight:	kg

mechatronic
systemtechnik gmbH

Tiroler Straße 60 0500 Villach Austria
phone + 43 (0) 4242 / 33 090-0
fax + 43 (0) 4242 / 33 095-10
office@mechatronic.at www.mechatronic.at
we can handle it



MATECH_WaveEtch 456-G2 SN:G2/2-1107A



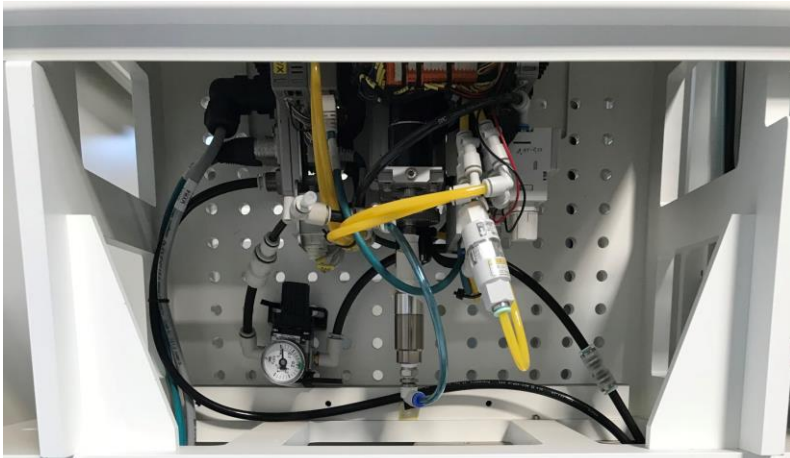
MATECH_WaveEtch 456-G2 SN:G2/2-1107A



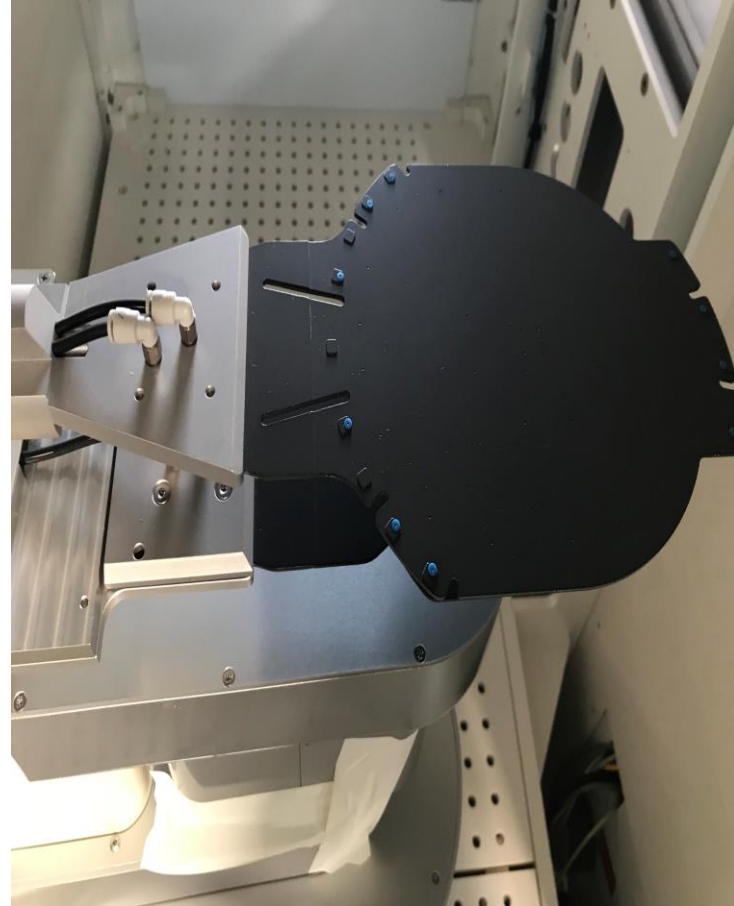
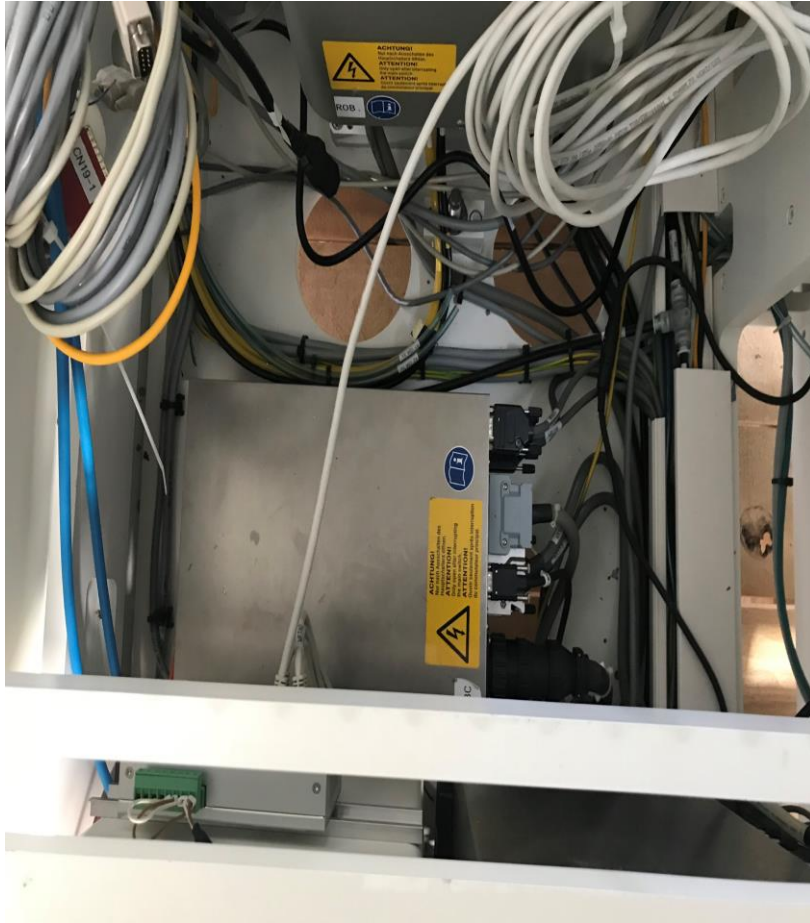
MATECH_WaveEtch 456-G2 SN:G2/2-1107A



MATECH_WaveEtch 456-G2 SN:G2/2-1107A



MATECH_WaveEtch 456-G2 SN:G2/2-1107A



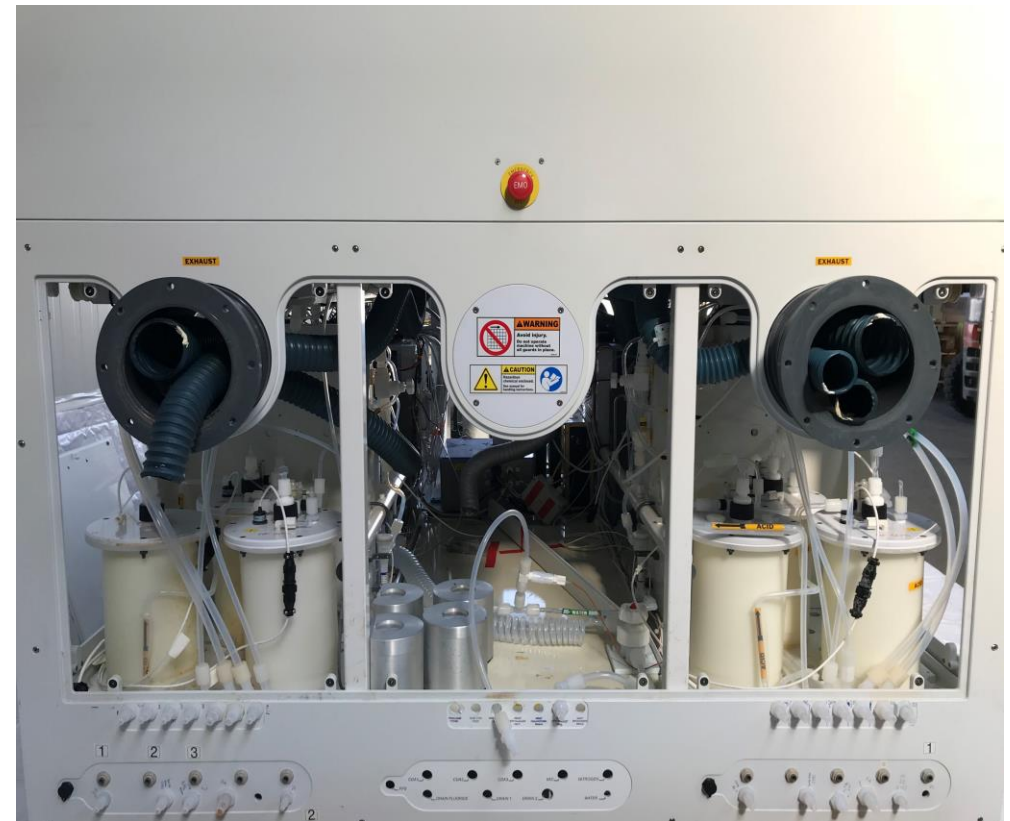
MATECH_WaveEtch 456-G2 SN:G2/2-1107A



MATECH_WaveEtch 456-G2 SN:G2/2-1107A



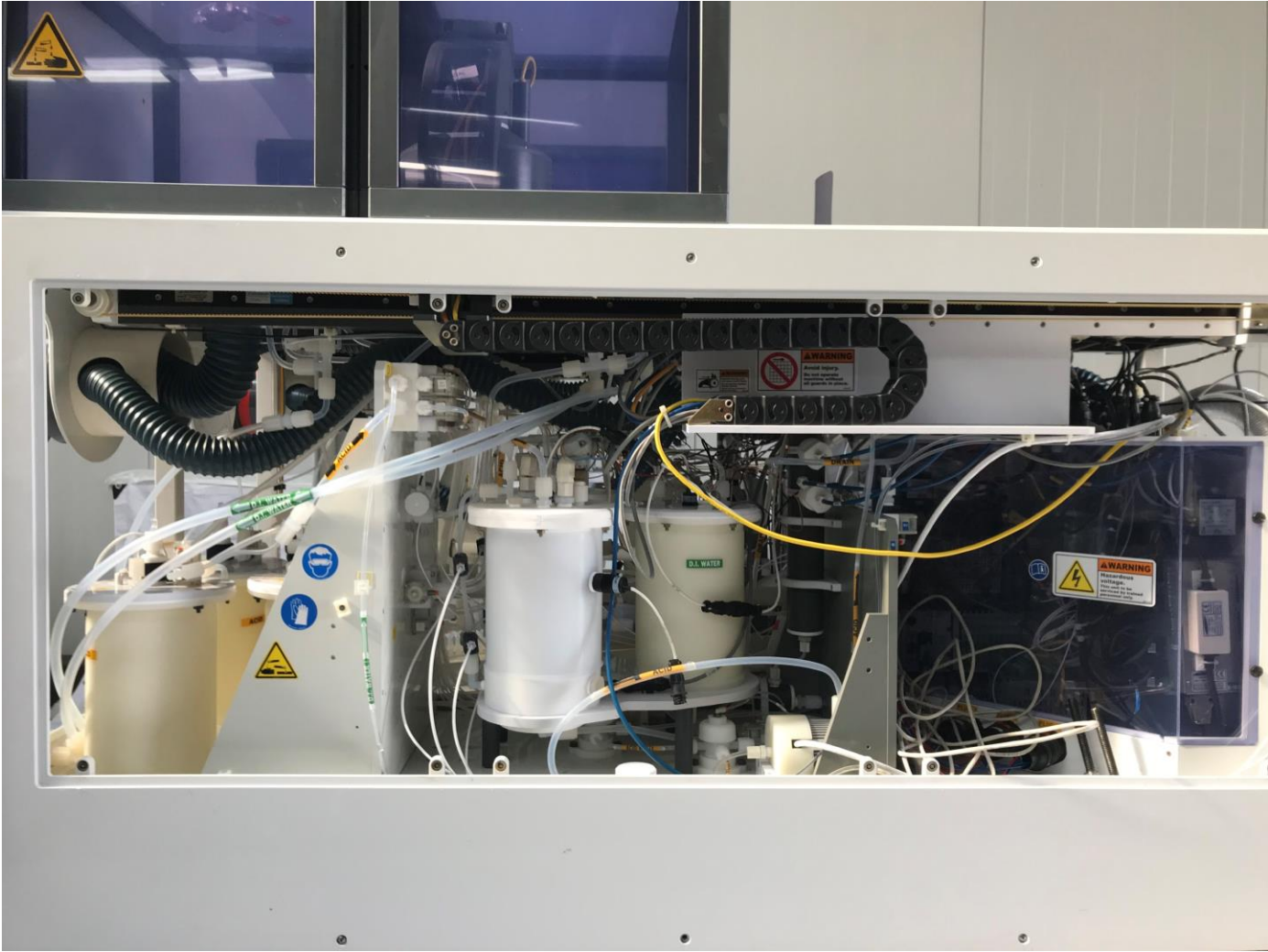
MATECH_WaveEtch 456-G2 SN:G2/2-1107A



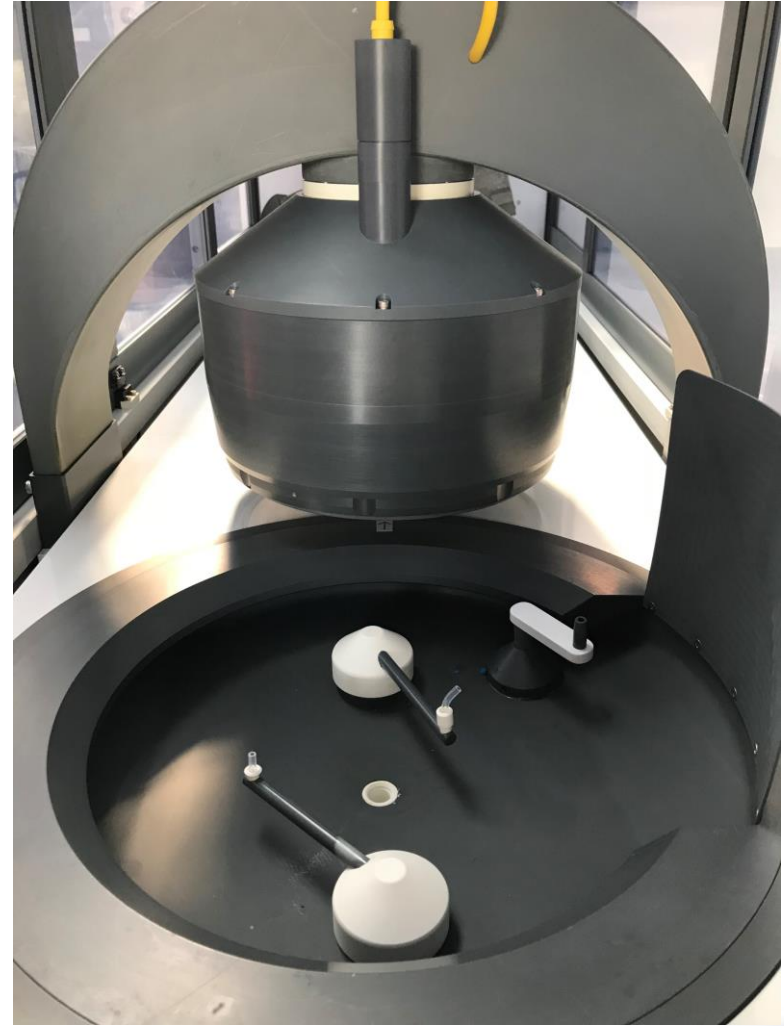
MATECH_WaveEtch 456-G2 SN:G2/2-1107A



MATECH_WaveEtch 456-G2 SN:G2/2-1107A



MATECH_WaveEtch 456-G2 SN:G2/2-1107A



MATECH_WaveEtch 456-G2 SN:G2/2-1107A



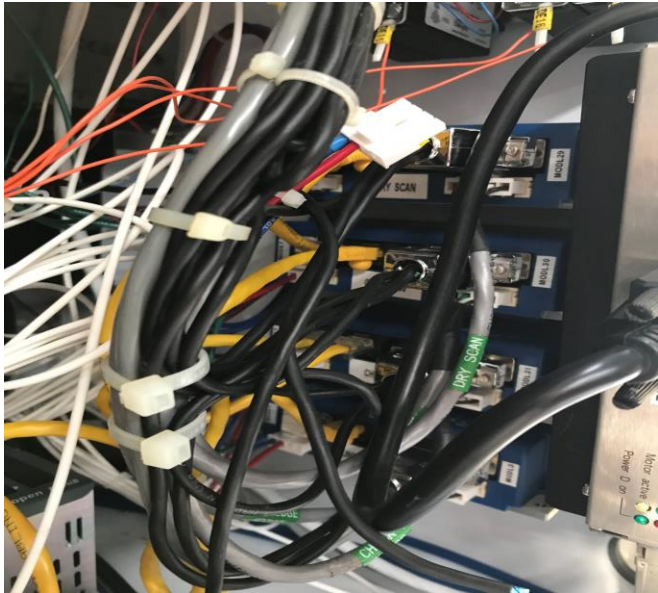
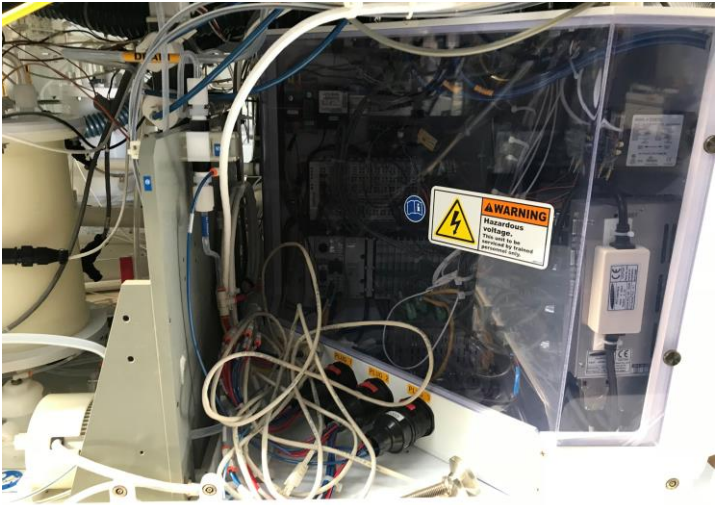
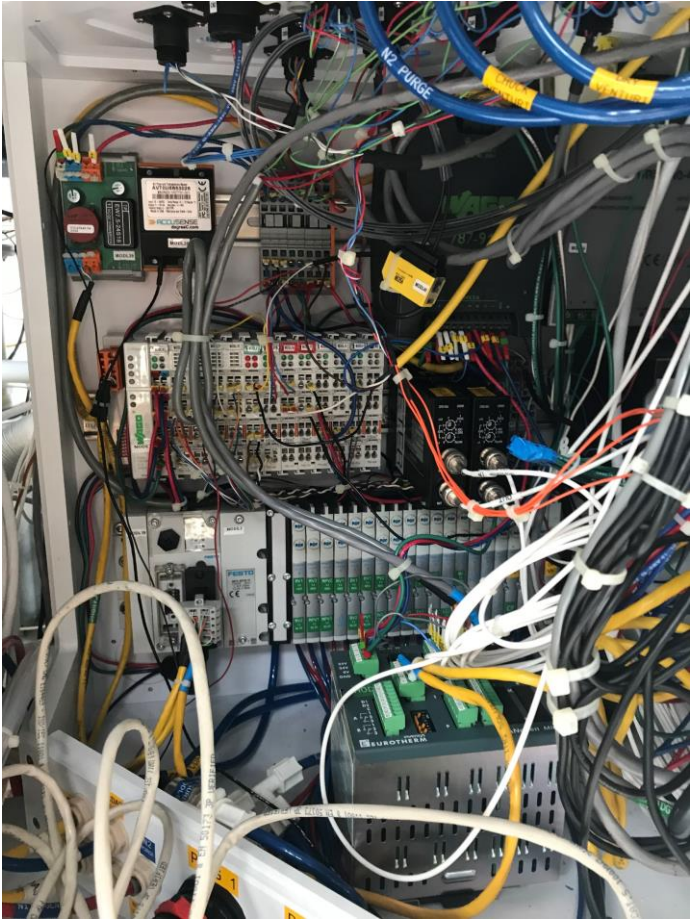
MATECH_WaveEtch 456-G2 SN:G2/2-1107A



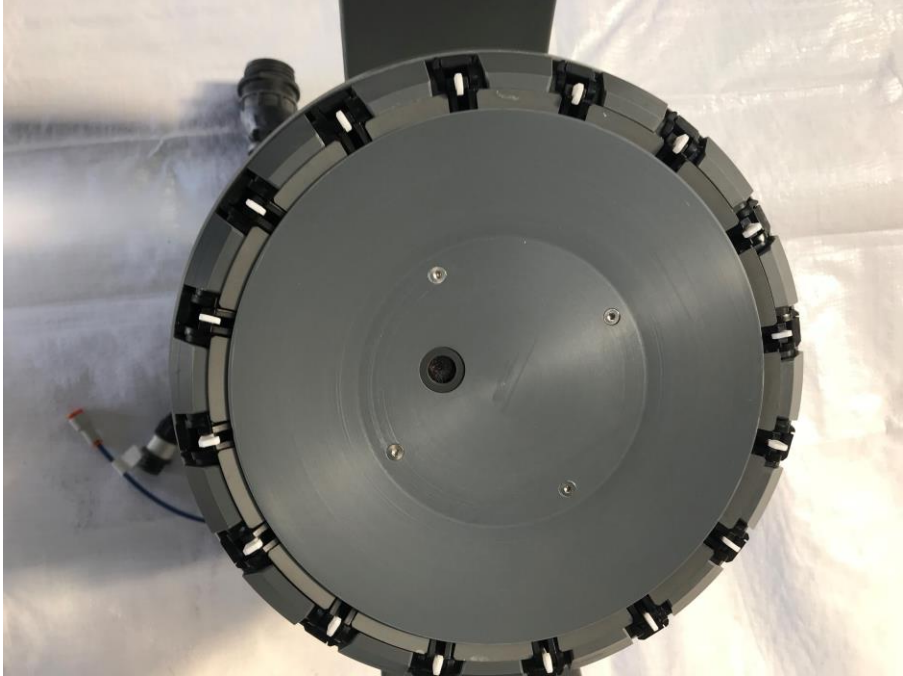
MATECH_WaveEtch 456-G2 SN:G2/2-1107A



MATECH_WaveEtch 456-G2 SN:G2/2-1107A



MATECH_WaveEtch 456-G2 SN:G2/2-1107A



MATECH_WaveEtch 456-G2 SN:G2/2-1107A



PTW Asia Equipment Sales



For Sales Enquiries Please Contact:

Name: Torsten Seifried

Telephone: +65 90261590

Email: torsten@ptwsingapore.com

www.ptwsingapore.com